

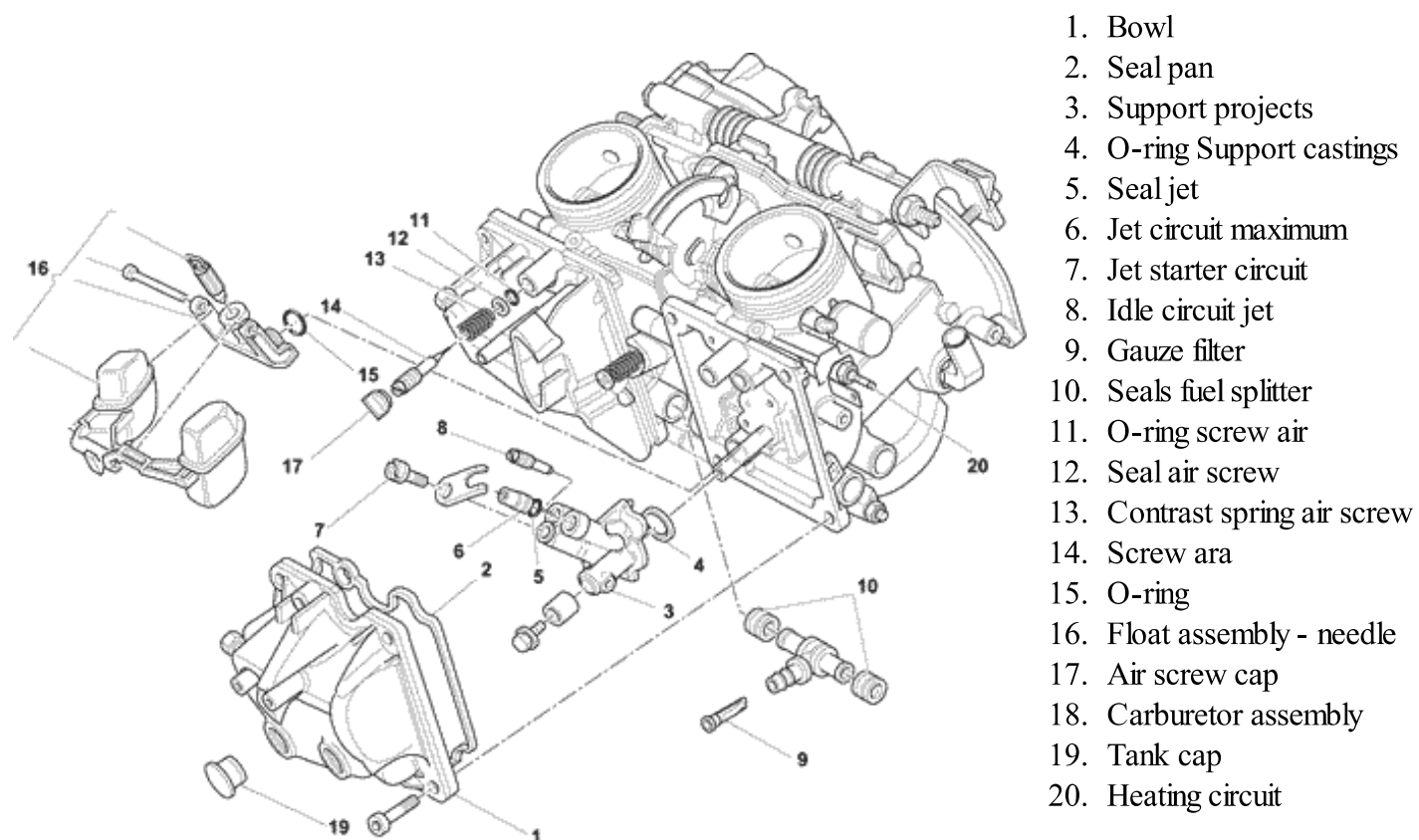
## Tuning a carburetor



The setting of "stock" of carbs is a good compromise to use their bikes every day and unpretentious. An optimization of their setting is a different matter. You will discover hidden qualities of our Desmodue: regular departures cold as hot, providing no voids regularly to a minimum ... If you do not want to push the bike from your mechanic and want to get your hands dirty, here are some settings to suit different types of Mikuni carburetors used on various series and Super Sports Monster.

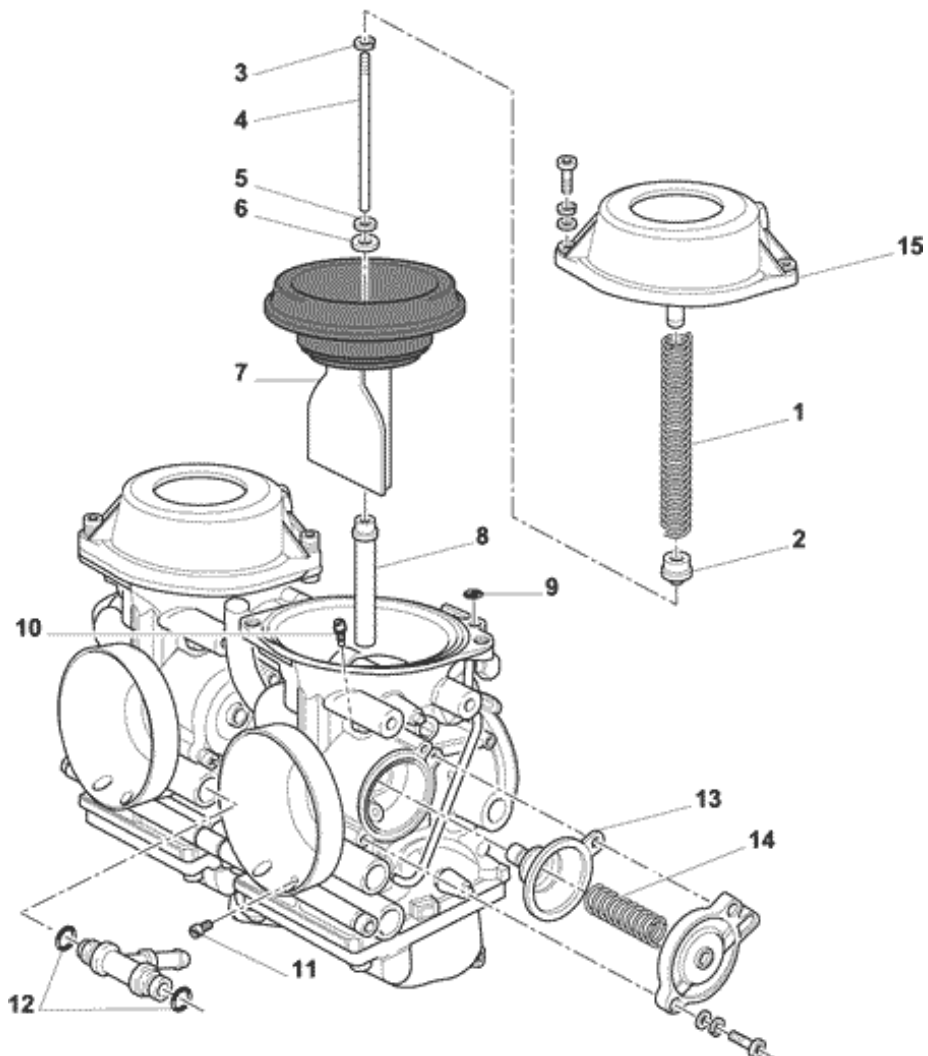
To achieve excellence in the adjustment I suggest you finish the adjustments screw air with a vacuum gauge.

I remind you that in order to work decently on carburetors, these must be removed completely from the bike. Obviously, before opening, their accurate cleaning in order to prevent impurities and dirt from entering within the various ducts. Images with legend below will come in handy as a guide to understanding where and how to intervene.



1. Bowl
2. Seal pan
3. Support projects
4. O-ring Support castings
5. Seal jet
6. Jet circuit maximum
7. Jet starter circuit
8. Idle circuit jet
9. Gauze filter
10. Seals fuel splitter
11. O-ring screw air
12. Seal air screw
13. Contrast spring air screw
14. Screw ara
15. O-ring
16. Float assembly - needle
17. Air screw cap
18. Carburetor assembly
19. Tank cap
20. Heating circuit

1. Spring contrast sash
2. Stopping ring jet needle
3. O-ring upper conical needle
4. Conical needle
5. Stop ring jet needle
6. Rosetta jet needle
7. Diaphragm / guillotine
8. Conical needle valve
9. Gasket
10. Jet air circuit
11. Jet air circuit
12. Seals
13. Diaphragm
14. Spring which
15. Cover membrane



### MONSTER 600 - 750 to 900

Type carburetor and engine capacity	Mikuni BDST 38 B159 600 cc	Mikuni BDST 38 B216A 750 cc	Mikuni BDST 38 B129 900 cc	Notes
Jet	132.5	132.5	140	
Slow jet	40	42.5	40	
Spring guillotine	730/10026	730/10026	730/10026	
Conical needle	5CJ1alla ^ 3 mark	5CJ1 to notch 4 ^	5C19 to notch 4 ^	Counted from the top notches.
Air screw horizontal cylinder	2 1/2 laps	3 laps	3 laps	Since all closed.
Air screw cylinder vertical	2 3/4 - 3 turns	3 1/4 - 3 1/2 laps	3 1/4 laps	Since all closed

Super Sport 600 - 750 to 900

Type carburetor and engine capacity	Mikuni BDST 38 B159 600 cc	Mikuni BDST 38 B70 750 cc	Mikuni BDST 38 B67 900 cc	Notes
Jet	135	140	140	
Slow jet	40	37.5	42.5	
Spring guillotine	730/10026	730/10026	730/10026	
Conical needle	5C19-3 - 3 ^ mark	5C19-3 ^ 4 to notch	5C19-4 to 4 ^ mark	Counted from the top notches.
Air screw horizontal cylinder	2 1/2 laps	3 laps	3 laps	Since all closed.
Air screw cylinder vertical	2 3/4 - 3 turns	3 1/4 - 3 1/2 laps	3 1/4 laps	Since all closed

Copyright © 2012 Team desmodromico.com. All Rights Reserved.

Joomla! By DUCASBK template.