

Brakers Stealth Vent Lights Installation Instructions



Supplies:

- Scissors
- VHB Adhesive Rolls
- Left Vent Light
- Right Vent Light
- Wire Harness
- Control Unit

Procedure:

1. Remove the tail fairing from your bike.
 - TST Tail Section Removal Video (Starts at 1:20 – 5:20):
<https://www.youtube.com/watch?v=ZRJa8WxgLro>
2. Take one of the VHB rolls and cut a 1.5 inch piece which we will apply to the top of the light.

3. Fold the piece of VHB adhesive in half on top of itself, then carefully peel back the red protective film covering the outside and apply it to the light as shown.



(When removing the red protective film, it's important to only touch the sides of the exposed adhesive so you do not contaminate it with oils from your fingers which will weaken the bonding strength of the adhesive.)

4. Insert the light module into the vent cut out, and apply light pressure at the top where you applied the VHB adhesive so it makes contact with the tail fairing.



5. The light should now be held in place loosely. Look at the vent from the outside and make sure the light is centered in the vent mesh, adjust if necessary.



6. Cut a 2.5 inch piece of VHB adhesive for the opposite side of the light.
7. Now apply the 2.5 inch strip of VHB we cut in previous step to the top side of the light as shown.



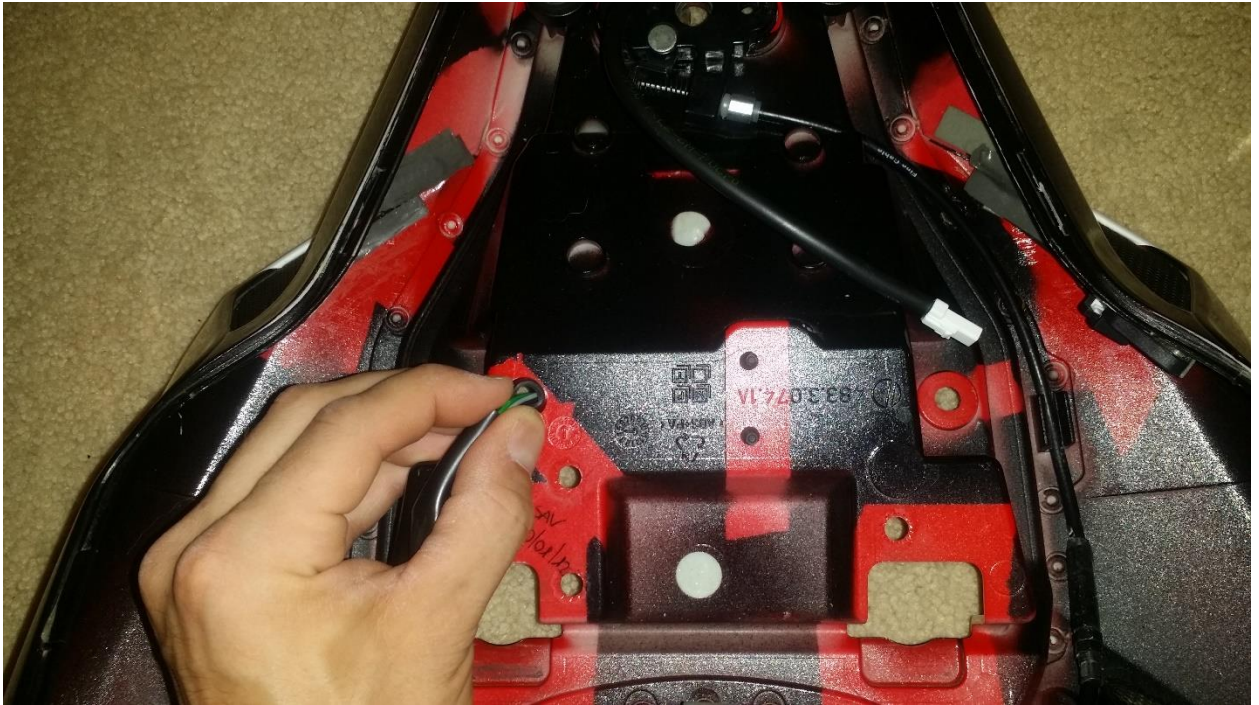
(Make sure you jam the tape into all the gaps between the light and the tail fairing. This will ensure the strongest bond. You want the adhesive to make contact with as much surface area on the tail section as possible.)

8. You should now be left with approximately 1.5 inches of VHB adhesive, use this final piece to secure the bottom portion of the light as shown below.



9. Repeat steps 1 through 8 for the other vent light.

10. Pinch the rubber grommet going into the trunk, and push it through the hole it was in on the fairing.



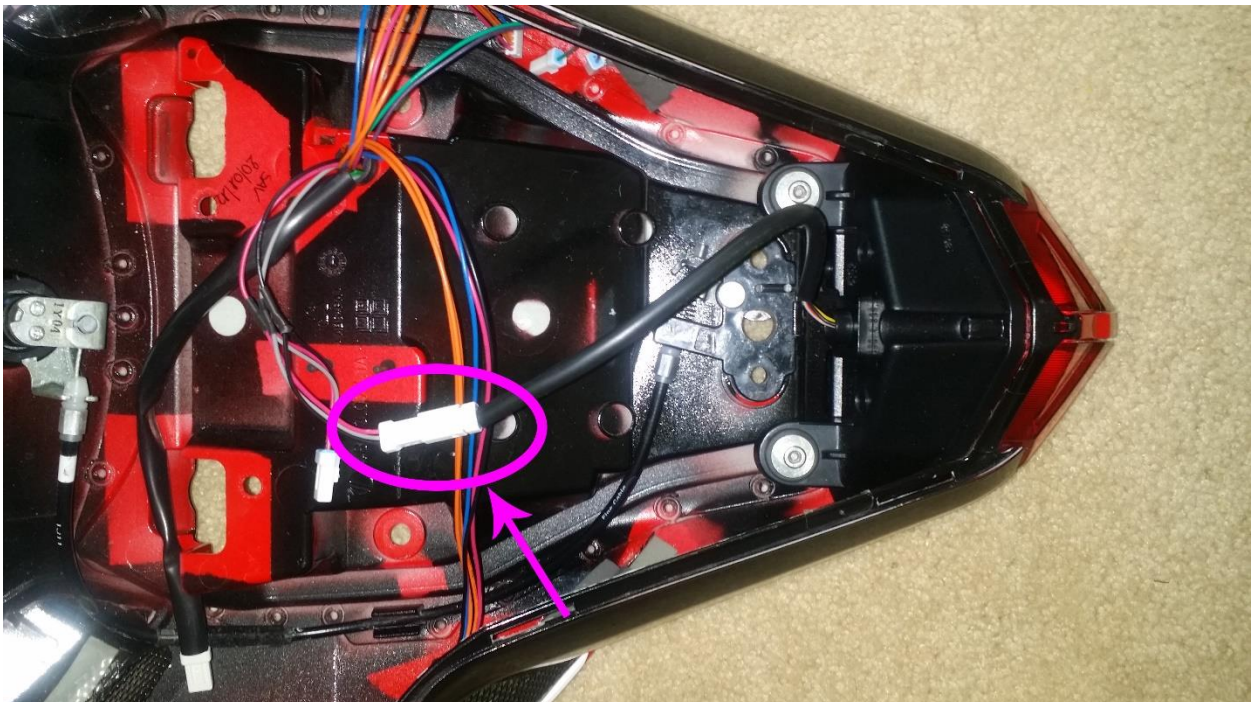
11. Feed the supplied wire harness through the hole, and then through the rubber grommet. Be gentle when feeding the wire harness through the grommet as it does take some force. Once the wire harness is through, reinsert the grommet back into the hole.



12. Plug the connector on the wire harness into the Control Unit, then remove the protective backing from the adhesive strip on the back of the control unit, and stick it in the trunk wherever you prefer.
13. Plug the two 6 pin leads on the wire harness into the left, and right vent lights. The shorter run of wires is for the left light, and the longer run of wires is for the right light.



14. Plug in the brake light connector from your brake light into the harness. (If you have an integrated tail light and Brakers Integrated wire harness, you will have 2 additional plugs for the turn signal wires coming out of your tail light).



15. Plug the Brake and Turn signal wires back into the bike harness and re-assemble. The Purple wire on the harness goes to the Green/White turn signal plug on the bike harness, and the other plug (Green wire) goes to the remaining 2 pin turn signal connector. The brake connector is the only 3 pin connector.

Controller Functionality:

You Brakers light controller has 3 buttons, labeled “1”, “2”, “3” which allow you to change the functionality of the lights.

Button “1” - Sets the primary mode of the lights to one of the following options:

- Turn Lights Only
- Brake Lights Only
- Turn & Brake Lights (both can operate at the same time)

Each time you press Button “1”, it will change the mode of the lights to the next one in the list above.

Button “2” – Toggles the color of the brake lights when in “Brake Lights Only” mode between red, and amber.

NOTE This button only works when the lights are set in “Brake Lights Only” mode, pressing this button in other modes will have no effects on functionality.

Button “3” – Toggles the “special mode” on/off, for your current primary mode of function.

Turn Lights

- Default Mode: Solid Flash Pattern (All lights blink on/off together)
- Special Mode: Sequential Flash Pattern (Lights blink in rows starting from the inside, going to the outside)

Brake Lights

- Default Mode: Solid On/Off (All lights come on when brake is pressed, and go off when brake is released)
- Special Mode: Flash Alert (Lights strobe briefly when brake is first applied, then stays solid)